

Keys, Key Signatures and Scales to fill a large circle of fifths

by



Gilbert DeBenedetti
www.gmajormusictheory.org

These pages show the keys, key signatures and scales which belong on a graphic of the circle of fifths. This graphic is available at

<http://www.gmajormusictheory.org/Fundamentals/workbooks.html>

You can print the jpg of the circle of fifths at FedEx Kinko's or anywhere that has an oversized printer.

To help position the information on these pages onto the circle, keep in mind the following:

- The information on these pages begins on the inside of the circle, with the names of keys to be placed in rectangles, and progresses outward to melodic minor scales.
- On staves in the circle, always read left to right (counter-clockwise).
- Indented staves and keyboards on these pages are continuations of staves and keyboards on the circle of fifths.
- Clock times (for example, 12:00) on these pages refer to the position of hours on an analog clock and correspond to positions on the circle of fifths. The short staves for the keys of C and A minor are on top, at 12:00.

Keys, Key Signatures and Scales to fill a large circle of fifths

1. KEYS

In the boxes near the center of the circle:

Inside left pairs of boxes starting at 11:00

Inside boxes: F, B \flat , E \flat , A \flat , D \flat , G \flat , C \flat

Outside boxes: d, g, c, f, b \flat , e \flat , a \flat

the pair of boxes on top, upside down at 12:00

Inside box: C

Outside box: a

pairs of boxes on bottom, starting at 7:00, and going right

Inside boxes: C \sharp , F \sharp , B, E, A, D, G

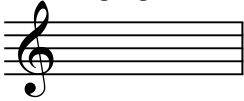
Outside boxes: a \sharp , d \sharp , g \sharp , c \sharp , f \sharp , b, e

2. KEY SIGNATURES

inside left, beginning at 11:00



inside top, upside down, at 12:00

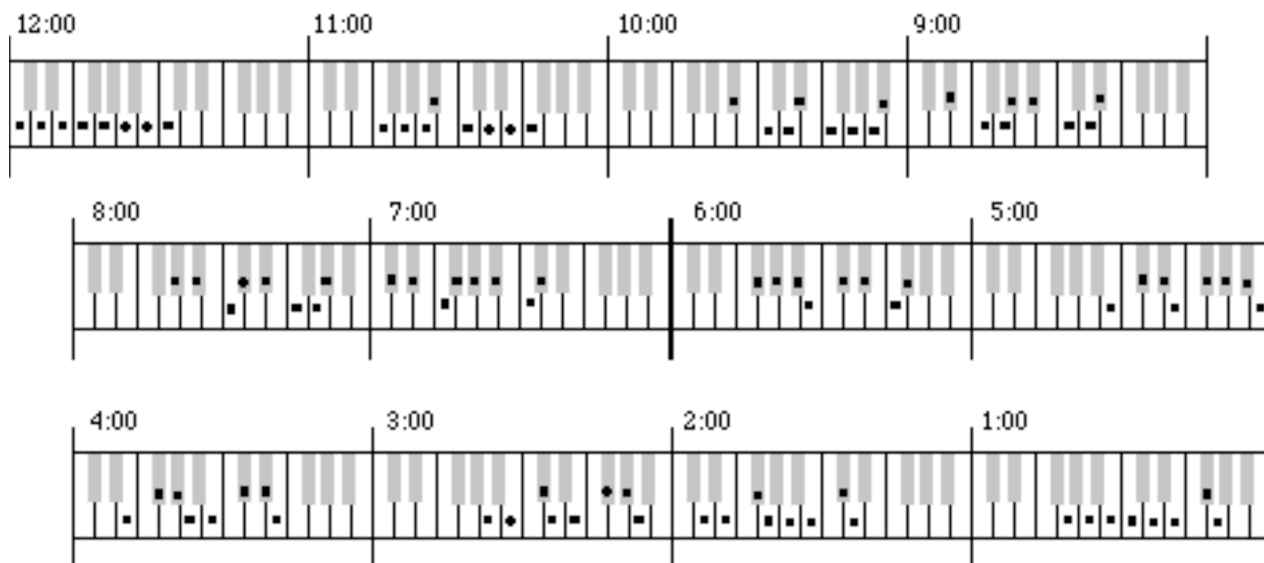


starts at bottom (7:00) and goes right



3. MAJOR SCALES

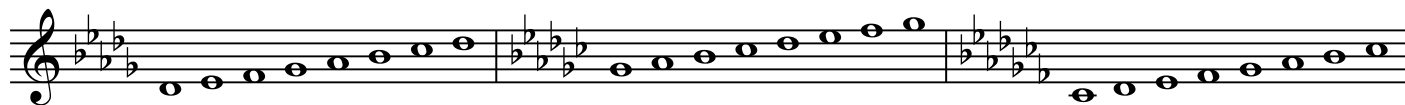
Inner keyboard



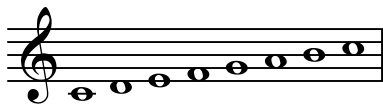
left, beginning at 11:00



staff on circle continues to indented staff below



top, upside down, at 12:00



starts at bottom (7:00) and goes right

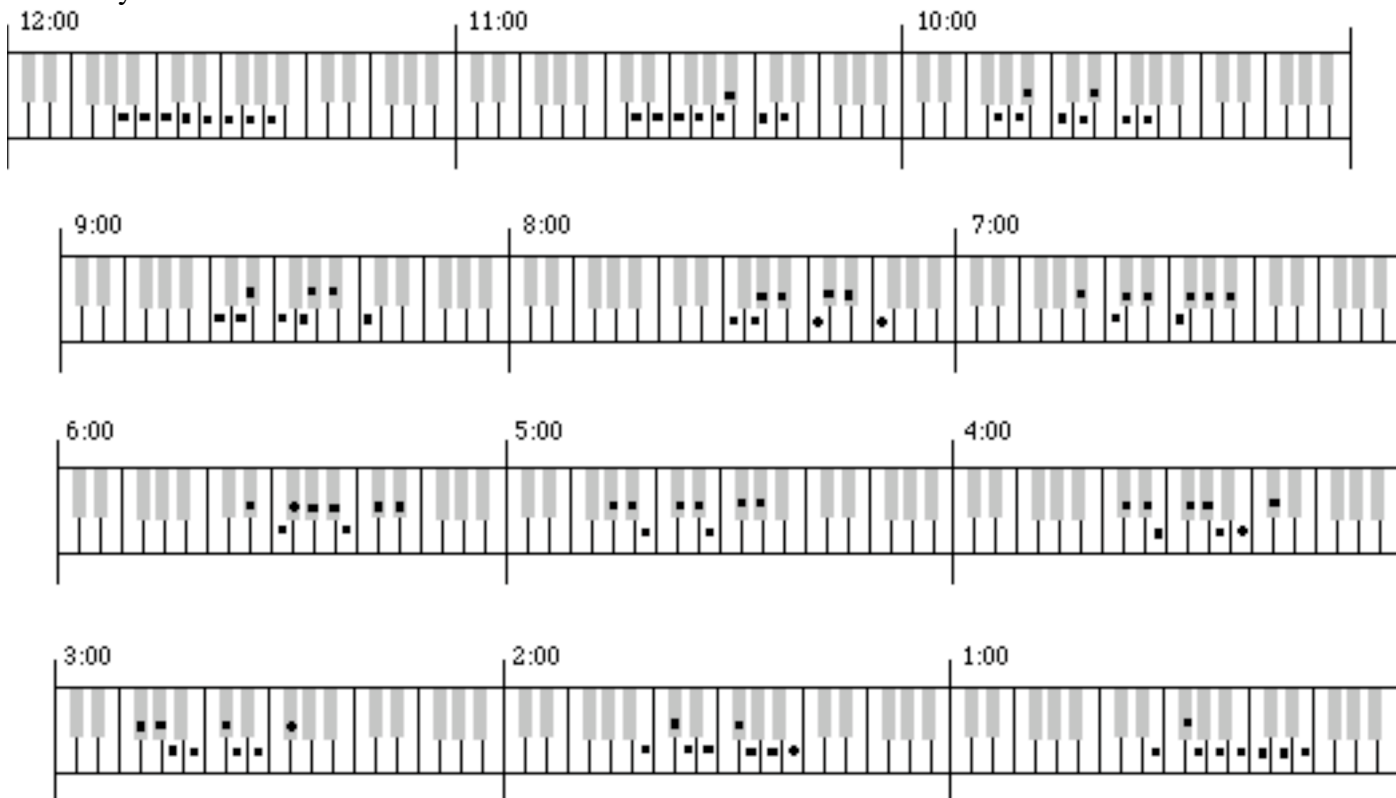


This is the most crowded scale

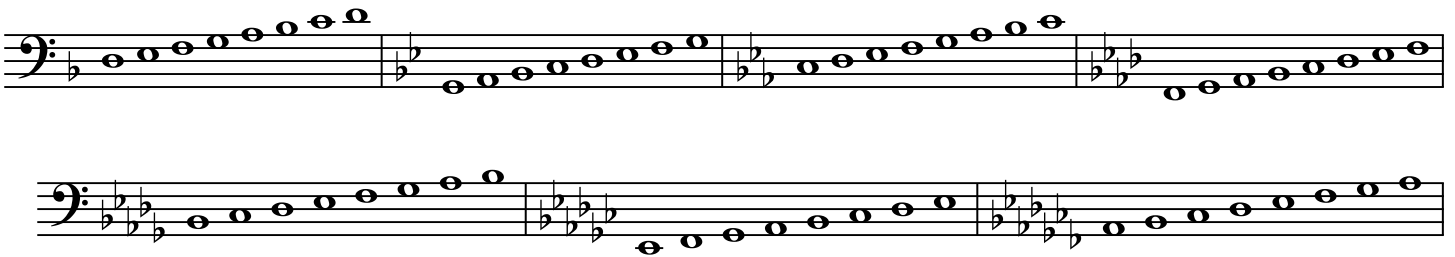


4. MINOR SCALES

Outer keyboard



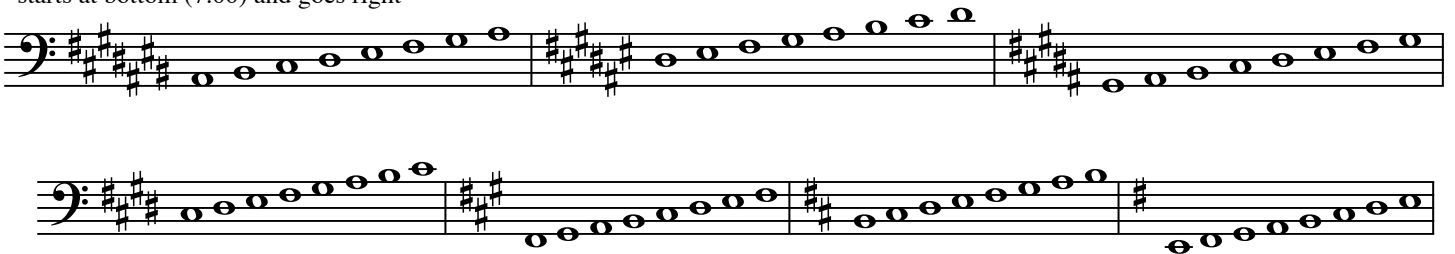
left, beginning at 11:00



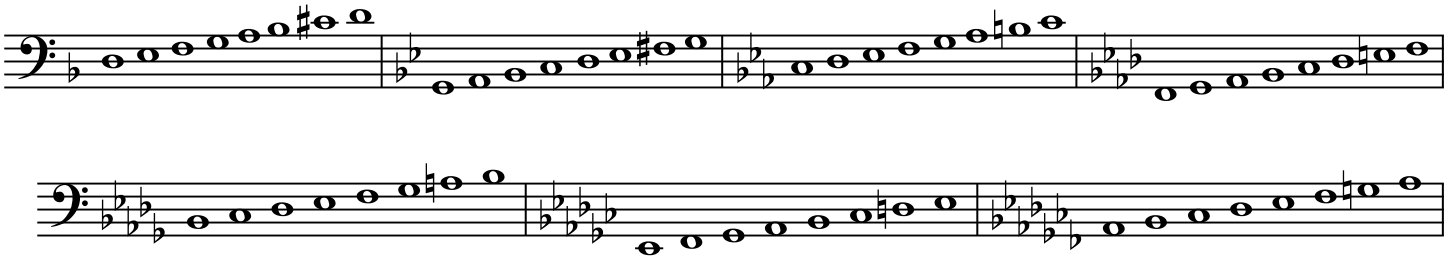
top, upside down, at 12:00



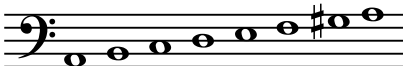
starts at bottom (7:00) and goes right



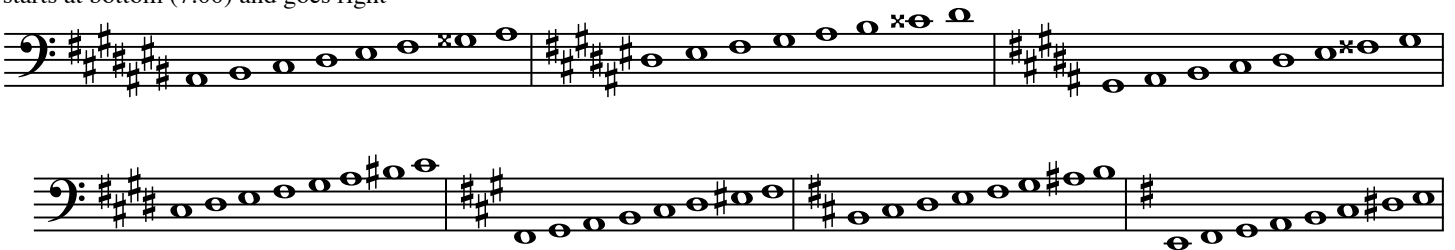
left, beginning at 11:00



top, upside down, at 12:00



starts at bottom (7:00) and goes right



THIS PAGE IS FOR THE OUTERMOST STAFFS

left, beginning at 11:00

top, upside down, at 12:00

starts at bottom (7:00) and goes right.