

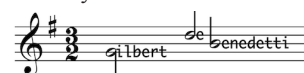
# J.S. Bach: Invention No. 1

Johann Sebastian Bach  
Ed: Gilbert DeBenedetti

The image displays a musical score for J.S. Bach's Invention No. 1, arranged in five systems. Each system consists of two staves: a treble clef staff on top and a bass clef staff on the bottom. The music is written in 4/4 time. The first system begins with a treble clef staff starting on a middle C and a bass clef staff starting on a G below middle C. The first measure of the treble staff has a dynamic marking of *mf*. The score includes various musical notations such as notes, rests, slurs, and dynamic markings like *mf*, *f*, *p*, and *cresc.*. Fingerings and articulation marks are also present throughout the piece.

Unedited version was provided by MakeMusic, Inc. Thank you.

More free music at  
[www.gmajormusictheory.org](http://www.gmajormusictheory.org)



12

2 1

1 2 1 3 2 2 1

*f*

14

4 1 4 2 5 1

*p*

3 3 3 1 1 1

16

4

5 3

18

2 1

*cresc.*

4

20

2 1 4 1 3 5 2 1

*f*

1 5 3